



# FY23 DE Coast Nourishment

## Rehoboth – Dewey – Bethany – S. Bethany & Fenwick Is.

### WEEKLY PROGRESS MEETING #15 Agenda

**USACE Contract:** Contract No. W912BU23C0002

**WMI Contract #:** 13220115

**Date/Time & Loc:** 15 June 2023 @ 1000 hrs. Bethany Beach Town Hall - 214 Garfield Pkwy, Bethany Beach, DE 19930

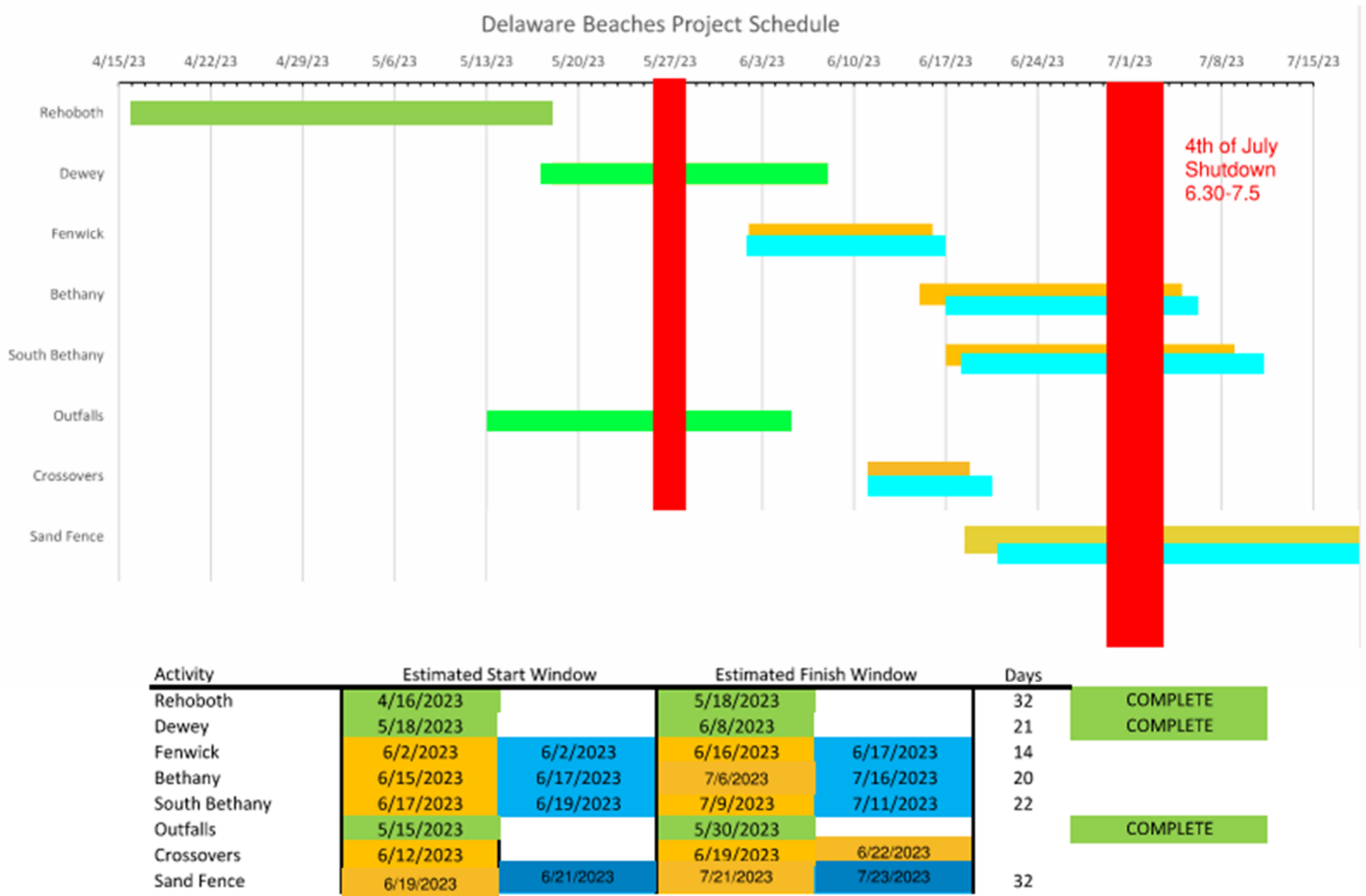
**Join Microsoft Teams Meeting: Meeting ID: 243 690 532 190 Passcode: 3uiSyB**

**Principle Attendees:**

USACE, WMI, Rehoboth/Dewey/Bethany/South Bethany/Fenwick Officials, DNREC, ER&M, Walters, Tide, Seismic, OHI, GBA

**Updated Dredge Schedule:**

- Fenwick will finish on Friday (tomorrow)
  - Bethany Beach will start today pending the completion of subline
    - Mag will continue pumping in Fenwick until the crew is ready for them at Bethany.
  - S. Bethany line will go in place on Sunday.
    - The RB will pump with the Mag in Bethany Beach until S. Bethany line is completed
    - Once S. Bethany line is in place and operational the RB will move over, and S. Bethany and Bethany will pump simultaneously
- (USACE will be notified on any schedule changes)



### Action Items since previous progress meeting:

- RFP – 0004 is in review by USACE.

### Mobilization

- Mob of Fenwick Island completed
  - Damage to asphalt directly in front on vehicular beach access at north end of parking lot.
  - Weeks will work with the state to coordinate payment for repairs.
- Mobilization S. Bethany access/ Demobilization Rehoboth access
  - All Equipment was trucked from Rehoboth Staging area to the South Bethany Staging area.
    - No WMI equipment remains at Deauville lot in Rehoboth.
      - Schedule walk through
    - ER&M has consolidated their equipment to the north side of the parking lot
    - Middlesex and Sea Colony have been kept UTD on transit down the beach during mobilization.
    - ER&M will bring Sand Fence and supplies to S. Bethany staging next week.

### Bethany Beach

- Subline was laid on 6/10
  - Noticed break in the line and had to pull it of the beach to re-lay.
- Subline was re-laid on 5/14 at sta. 28+50
  - Connected the first 5 of 7 pieces. Operations were called off due to WX.
  - Today working to connect the final 2 pieces and Float hose/connection.
  - Pending the completion of the line operations will start today, advancing north, with the dredge Magdalen
  - Dumpster arriving to Cedarwood staging today.
    - Approved parking space has been cones off for delivery
    - This access will be used for refueling and port a pottys

### South Bethany Beach

- Subline was installed at Sta 17+50 which is between 5<sup>th</sup> and 6<sup>th</sup> streets.
  - Subline is broken and nonoperational.
  - Bullgang will pull the Fenwick line and lay in place at station 20+50.
    - They will add two additional pieces of subline for a total of 5
    - Once the line is operational the RB will pull off Bethany line and work in S. Bethany.
    - Operations will begin to the North.
    - Broken line at sta. 17+50 working to get approved dive plan and schedule to have removes.

### Survey

- **Rehoboth Beach**
  - Beachfill is completed Final quantity: 273,177 cys
- **Dewey Beach**
  - Beachfill completed 6/8, Subline Removed.
    - No remaining equipment
  - Expected AD Volume to Date: 190,694 yd<sup>3</sup>
    - WMI & USACE working on final volumes.

- **Fenwick Beach**
  - BD's to date: entire beach
  - AD's to date: Sta. 0+00 to 44+00
    - Comp Slope Sta. 01+00, 06+00, 10+00 to 13+00, 18+00, 20+00, 21+00, 36+00, & 39+00
    - Pad 28+00 to 30+00
  - Current BD volume 215,872 yd<sup>3</sup>
  - Current AD Volume to Date: 179,833 yd<sup>3</sup> (as of yesterday)
  
- **S. Bethany Beach**
  - Pre-cons have been submitted.
  - BD's conducted 6/6.
    - Re-Run today
  - Template approved via email
    - submitted in RMS
  
- **Bethany Beach**
  - Pre-cons have been submitted.
  - BD's conducted 6/6 and 6/11
    - Will be updated as need
  - WMI Template sent to USACE for review

### **Beachfill & Dredging**

- **Rehoboth Beach:**
  - Beachfill completed
  - 191 loads total
  
- **Dewey Beach:**
  - Beachfill completed
  - 71 loads total
  
- **Fenwick Island beach:**
  - Subline is laid at Sta. 27+50. – Currently discharging north
  - Discharge Location: Top: 48+00 & Bottom: 47+70
  - Beach Access Closures: Farmington, E Georgetown, Houston (all opening this morning), Indian and James
  - RB Loads to Date (as of 7am): 25
  - MAG Loads to Date (as of 7am): 24
  - Total Loads Delivered to Date: 49

### **Outfalls**

- All outfall work was completed as per contract.
- All repairs were completed as well.
- USACE was on site during work and verified all was completed.
- Waiting for final as-builds from Walters

## **Crossovers**

- **Preparatory Phase:**
  - Prep Meeting: will be held Monday 6.12.23
  - Work began on the afternoon of 6.12.23 at the Virginia St. outfall moving south.
    - Repairs to the have been completed from Va. (46+50) to Delaware (64+50)
    - Remaining 4 more pedestrians to repair (Va. street north), the handicap, and the vehicular.
    - Compaction test, showing 90%, will need to be conducted on each repair after completion.

## **Structure Monitoring**

- Monitors are in place and collecting data in Fenwick, Bethany, South Bethany, and Rehoboth beaches.

## **Environmental Concerns**

- Bird monitoring surveys being conducted daily in Dewey and Fenwick
- No sighting of piping plovers to date. All Reports being submitted daily with QC report.
- Dredge Drag heads are being inspected after every load. No MEC or Endangered wildlife reported to date.

## **OHI (MEC)**

- OHI (MEC) Techs are onsite, working 3-8hr shifts, conducting 24-hour coverage on both sites.
- 4 fuses that were in the day box at Dewey were exploded by the EOD team on 6.7.23 on the beach
- Both Day boxes are currently empty.

## **Sand Fence installation, Dune Grass Planting, Demob**

- **Preparatory Phase:**
  - Prep Meeting: TBD

## **Site Safety**

- Inspections for the month of June are ongoing.
- Security at both locations 24hrs.
- STDL is up to date. There are no deficiencies.

## **Discuss other business, as appropriate:**